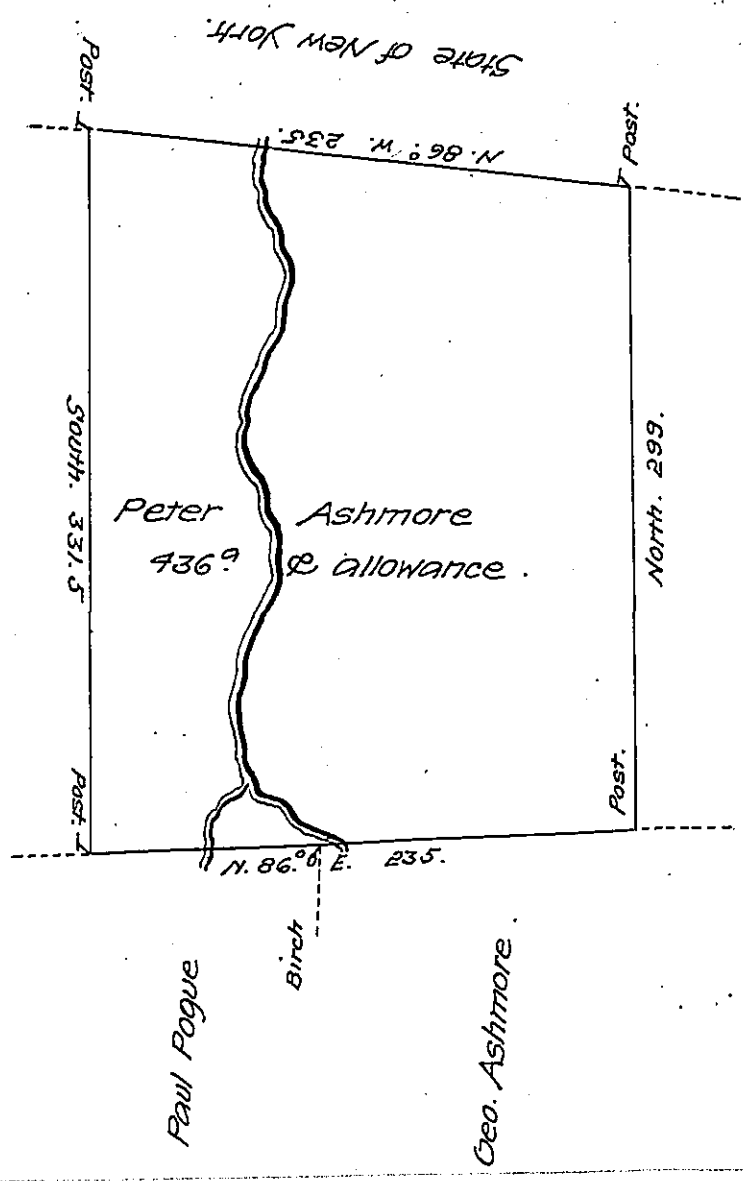


g. 73

A-39-11
Henry Pogue.



Pg 157

A Draught of a Tract of Land Called _____ Situate on the Waters of
 Appalachunk Creek, Adjoining Land of George Ashmore, and others in Stoke
 Township Northumberland County Surveyd on the 23^d day of April 1785 for
 Peter Ashmore by Virtue of his Warrant dated the 4th day of April 1785
 Containing Four Hundred and Thirty Six Acres and allowance of Six P Cent for
 Roads &c. by _____
 To John Lutrens Esq^r W^m Gray D.S.
 Surveyor Gen^l

IN TESTIMONY that the above is a copy of the original remaining on file in
 the Department of Internal Affairs of Pennsylvania, made
 conformably to an Act of Assembly approved the 16th day of
 February 1833, I have hereunto set my hand and caused
 the Seal of said Department to be affixed at Harrisburg,
 this thirteenth day of February 1908.

Henry Hoover
 Secretary of Internal Affairs.